

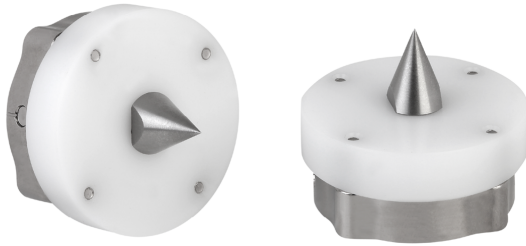
# Tool Center Point VEE-TCP



## Suitability for industry specific applications

### Applications

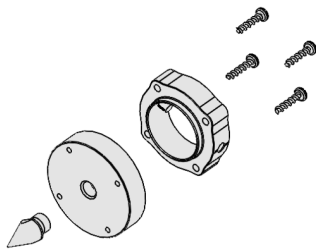
- Determining the tool position of an industrial robot with a tool center point that can be directly flange-mounted



Tool Center Point VEE-TCP

### Design

- Tool center point with standard interface to flange modules VEE-QCM or vacuum modules VEE-QCMV



System design Tool Center Point VEE-TCP

### Product highlights

- Simple and fast tool position determination with the aid of the easily recognizable centering point
- Bayonet connection enables fast, tool-free change of the center point

### Multimedia product presentation

Medium	Link
Product video	<a href="https://vimeo.com/147437579">https://vimeo.com/147437579</a>
	<a href="https://vimeo.com/146367400">https://vimeo.com/146367400</a>

